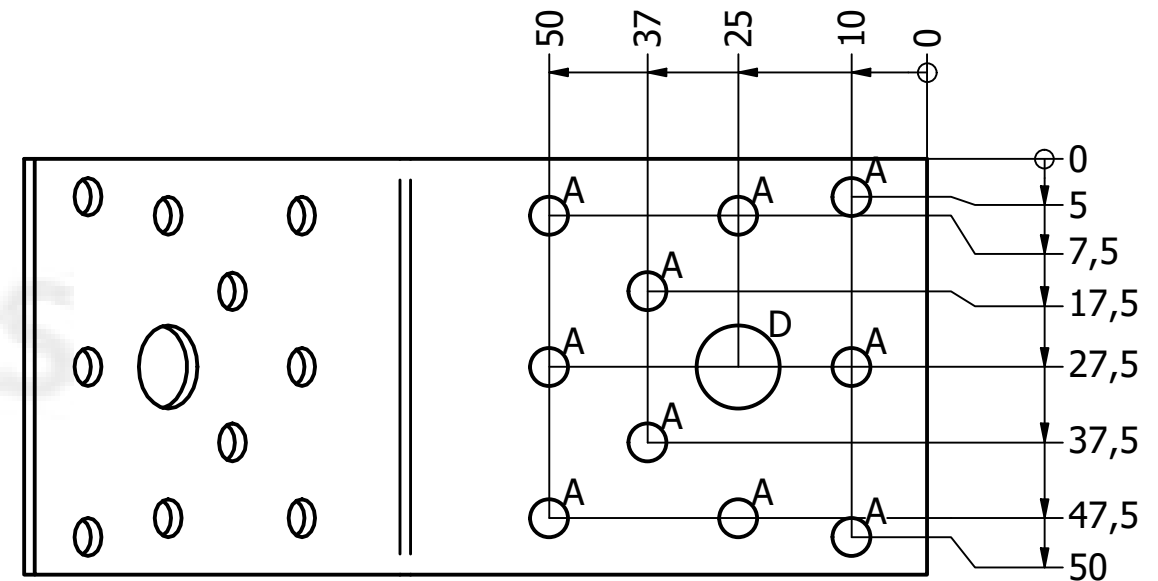


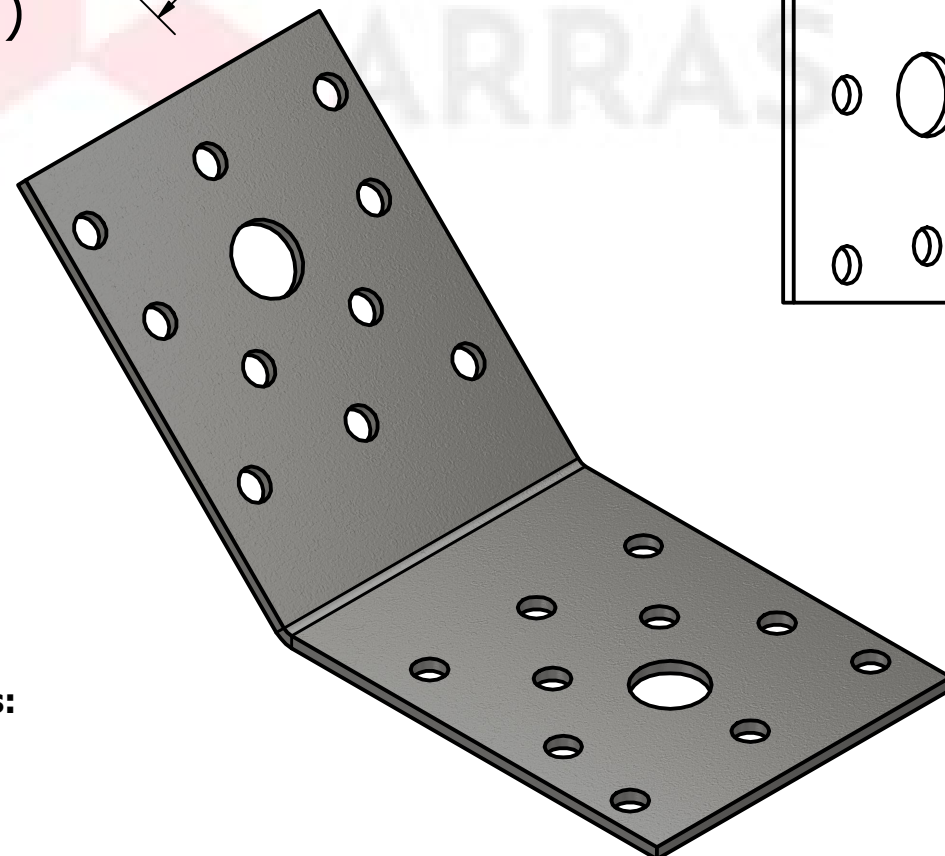
B (1:1)





HOLE	SIZE	QTY
A	Ø5 THRU	20
D	Ø11 THRU	2

General tolerances for nominal dimensions:

- Arm lengths ±2 mm
- Product pitch ±1 mm
- Width ±1 mm
- Holes ±0.4 mm



Drawn by: Vilmech	Description: Angle bracket 70x70x55x2,0 135°	
Checked by: I.M.	ART: 73103	
Approved by: U.K.		
Date: 14.04.2026	Size: A3	Material: HDG DX51D + Z275/ HDG S250GD + Z275
	Projection: 	Weight: 0.112
	M 1 : 1	Version: A