



PRODUCT CATALOGUE



ARRAS
CONSTRUCTION
FURNITURE



Holding it **together**

Arras OÜ, established in 1999, is one of the largest manufacturers and wholesalers of fastening equipment in Northern Europe today. Our headquarters in Estonia, combining office, production, and warehouse space, covers over 4,700 m², ensuring seamless and efficient operations. Our aim is to be a reliable, innovative, and personalized supplier to our partners, ensuring the provision of high-quality products and services. To guarantee top quality, we hold ISO 9001 quality management certification, ETA approvals, and CE marking. Through continuous digitalization, automation, and engagement with various ESG topics, we are cementing the longevity of our company.

Arras CF products are manufactured using the latest technologies, ensuring high quality and precision. Our production processes rely on advanced automatic stamping lines with capacities ranging from 40 to 250 tons, supported by packaging lines.

We are pleased to present this catalogue, which provides an overview of our products and their applications. We hope you find it informative and engaging.



ARRAS
CONSTRUCTION FURNITURE

Arras by the numbers:

25 + Years of
experience

1250 + Unique
products

10 + Product
categories

For inquiries, please contact:

 export@arras.eu

 arras.eu

 [Arras](#)

CONTENTS

05 Angle Brackets

- Angle brackets
- Angle brackets reinforced
- Facade brackets
- Angle brackets stiffened
- Asymmetric angle brackets
- Angle brackets with hooks
- Angle brackets for log homes
- Angle brackets with 135° angle
- Furniture brackets

17 Straps & Hangers

- Steel straps
- Shoring straps
- Joist hangers, outside
- Joist hangers, inside
- Purlin anchors

14 Nail Plates

- Nail plates
- Perforated nail plates
- Nail plates with phased holes
- L- and T-plates

21 Post Feet & Supports

- Post feet, adjustable
- Post feet, type I
- Post feet, type U
- Threaded column shoes
- Screwposts, screw-in
- Circular drive-in post support, A
- Drive-in post supports, type A
- Post feet with ground plate, B

26 Fasteners & Screws

Clamps for weatherboard
Angle bracket screws
Anchor nails
Spacers
Threaded rods

30 Shelf Brackets & Supports

Shelf brackets "Type-AB"
Shelf brackets "Antique"
Shelf brackets "Type-C"
Consoles w. and without support
U and L straps
Shelf brackets

34 Miscellaneous

Building cleats
Barbed connectors
Terrace spacers and sets
Log brackets
Room organisers

ANGLE BRACKETS

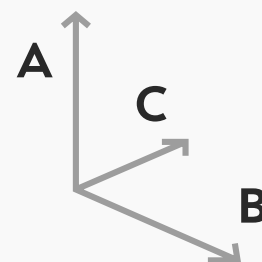
ANGLE BRACKETS

ARTICLE	MEASUREMENTS				HOLE DIMENSIONS	MATERIAL	SURFACE	CERTIFICATE
	A	B	C	T				
71401	20	20	40	2,0	5	DX51D	Z275	DC
71101	30	30	25	2,0	4,2	DX51D	Z275	CE
71402	40	40	20	2,0	5	DX51D	Z275	CE
71403	40	40	30	2,0	5	DX51D	Z275	DC
71320	40	40	40	2,0	5 ; 11	DX51D	Z275	CE
71404	40	40	40	2,0	5	DX51D	Z275	CE
71252	40	40	40	2,0	5	A2	2B	CE
71461	40	40	40	2,0	5	A4	2B	CE
71321	40	40	40	2,5	5 ; 11	DX51D	Z275	CE
71438	40	40	40	2,5	5	DX51D	Z275	CE
71434	40	40	50	2,0	5	DX51D	Z275	CE
71405	40	40	60	2,0	5	DX51D	Z275	CE
71441	40	40	60	2,5	5	DX51D	Z275	CE
71422	40	40	80	2,0	5	DX51D	Z275	CE
71423	40	40	100	2,0	5	DX51D	Z275	CE
71443	40	40	100	2,5	5	DX51D	Z275	CE
71102	50	50	35	2,0	5 ; 9	DX51D	Z275	CE
74808	50	50	35	2,0	5 ; 9	DX51D	Z275 + RAL 9003 WHITE	DC
71201	50	50	35	2,0	5 ; 9	A2	2B	CE
71462	50	50	35	2,0	5 ; 9	A4	2B	CE
71118	50	50	35	2,5	5 ; 9	DX51D	Z275	CE
71209	50	50	35	2,5	5 ; 9	A2	2B	CE
71466	50	50	35	2,5	5 ; 9	A4	2B	CE
71116	50	50	40	2,0	5 ; 11	DX51D	Z275	CE
71109	50	50	55	2,5	5 ; 9	DX51D	Z275	CE
74801	50	50	55	2,5	5 ; 9	DX51D	Z275 + RAL 9003 WHITE	DC
74804	50	50	55	2,5	5 ; 9	DX51D	Z275 + RAL 8025 BROWN	DC
71424	60	60	20	2,0	5	DX51D	Z275	CE
71406	60	60	30	2,0	5	DX51D	Z275	CE
74802	60	60	40	2,0	5	DX51D	Z275 + RAL 9003 WHITE	DC
74805	60	60	40	2,0	5	DX51D	Z275 + RAL 8025 BROWN	DC
74812	60	60	40	2,0	5	DX51D	Z275 + RAL 9004 BLACK	DC
71322	60	60	40	2,0	5 ; 11	DX51D	Z275	CE
71407	60	60	40	2,0	5	DX51D	Z275	CE
71464	60	60	40	2,0	5	A4	2B	CE
71254	60	60	40	2,0	5	A2	2B	CE
71323	60	60	40	2,5	5 ; 11	DX51D	Z275	CE

ARTICLE	MEASUREMENTS				HOLE DIMENSIONS	MATERIAL	SURFACE	CERTIFICATE
	A	B	C	T	∅			
71436	60	60	40	2,5	5	DX51D	Z275	CE
71408	60	60	50	2,0	5	DX51D	Z275	CE
71437	60	60	50	2,5	5	DX51D	Z275	CE
71409	60	60	60	2,0	5	DX51D	Z275	CE
71255	60	60	60	2,0	5	A2	2B	CE
71467	60	60	60	2,0	5	A4	2B	CE
71439	60	60	60	2,5	5	DX51D	Z275	CE
71425	60	60	80	2,0	5	DX51D	Z275	CE
71410	60	60	80	2,5	5	DX51D	Z275	CE
71426	60	60	100	2,0	5	DX51D	Z275	CE
71412	60	60	100	2,5	5	DX51D	Z275	CE
71103	65	65	55	2,0	5 ; 9	DX51D	Z275	CE
71125	65	65	55	3,0	5 ; 9	DX51D	Z275	CE
71104	70	70	55	2,0	5 ; 11	DX51D	Z275	CE
71162	70	70	55	2,0	5 ; 11	A2	2B	CE
71126	70	70	55	2,5	5 ; 11	DX51D	Z275	CE
71163	70	70	55	2,5	5 ; 11	A2	2B	CE
71413	80	80	20	2,0	5	DX51D	Z275	CE
71324	80	80	40	2,0	5 ; 11	DX51D	Z275	CE
71414	80	80	40	2,0	5	DX51D	Z275	CE
71325	80	80	40	2,5	5 ; 11	DX51D	Z275	CE
71447	80	80	40	2,5	5	DX51D	Z275	CE
75608	80	80	50	2,5	5 ; 11	DX51D	Z275	CE
71427	80	80	60	2,0	5	DX51D	Z275	CE
71256	80	80	60	2,0	5	A2	2B	CE
71415	80	80	60	2,5	5	DX51D	Z275	CE
71428	80	80	80	2,0	5	DX51D	Z275	CE
71416	80	80	80	2,5	5	DX51D	Z275	CE
71429	80	80	100	2,0	5	DX51D	Z275	CE
71417	80	80	100	2,5	5	DX51D	Z275	CE
71127	90	90	40	2,0	5 ; 11	DX51D	Z275	CE
71105	90	90	40	2,5	5 ; 11	DX51D	Z275	CE
71210	90	90	40	2,5	5 ; 11	A2	2B	CE
71121	90	90	40	3,0	5 ; 11	DX51D	Z275	CE
71115	90	90	65	2,0	5 ; 7 ; 13	DX51D	Z275	CE
71208	90	90	65	2,0	5 ; 7 ; 13	A2	2B	CE
71106	90	90	65	2,5	5 ; 7 ; 13	DX51D	Z275	CE
71137	90	90	65	2,5	5 ; 7 ; 9 ; 13	DX51D	Z275	CE
71138	90	90	65	2,5	5;7;9;10X40;11	DX51D	Z275	CE

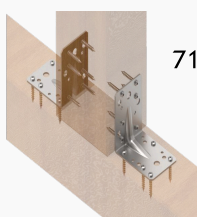
ANGLE BRACKETS

ARTICLE	MEASUREMENTS				HOLE DIMENSIONS	MATERIAL	SURFACE	CERTIFICATE
	A	B	C	T	∅			
71202	90	90	65	2,5	5 ; 7 ; 13	A2	2B	CE
71463	90	90	65	2,5	5 ; 7 ; 13	A4	2B	CE
71117	90	90	90	2,5	5 ; 7 ; 9 ; 11	DX51D	Z275	DC
71326	100	100	40	2,0	5 ; 11	DX51D	Z275	CE
71327	100	100	40	2,5	5 ; 11	DX51D	Z275	CE
75609	100	100	50	2,5	5 ; 11	DX51D	Z275	CE
71107	100	100	55	2,5	5 ; 7 ; 9	DX51D	Z275	CE
71431	100	100	60	2,0	5	DX51D	Z275	CE
71419	100	100	60	2,5	5	DX51D	Z275	CE
71432	100	100	80	2,0	5	DX51D	Z275	CE
71420	100	100	80	2,5	5	DX51D	Z275	CE
71433	100	100	100	2,0	5	DX51D	Z275	CE
75612	100	100	100	2,5	5 ; 11	DX51D	Z275	CE
71421	100	100	100	2,5	5	DX51D	Z275	CE
71112	105	105	90	2,0	5 ; 7 ; 9 ; 11	DX51D	Z275	CE
71108	105	105	90	2,5	5 ; 7 ; 9 ; 11	DX51D	Z275	CE
71203	105	105	90	2,5	5 ; 7 ; 9 ; 11	A2	2B	CE
71119	105	105	90	3,0	5 ; 7 ; 9 ; 11	DX51D	Z275	CE
71132	120	120	90	2,5	5 ; 7 ; 9 ; 11	DX51D	Z275	CE
71133	120	120	90	3,0	5 ; 7 ; 9 ; 11	DX51D	Z275	CE
71135	140	140	90	3,0	5 ; 7 ; 9 ; 11	DX51D	Z275	CE



ANGLE BRACKETS REINFORCED

ARTICLE	MEASUREMENTS				HOLE DIMENSIONS	MATERIAL	SURFACE	CERTIFICATE
	A	B	C	T	∅			
71341	70	70	55	1,5	5 ; 11	DX51D	Z275	CE
71304	70	70	55	2,0	5 ; 11	DX51D	Z275	CE
74843	70	70	55	2,0	5 ; 11	DX51D	Z275 + RAL 9003 WHITE	DC
71166	70	70	55	2,0	5 ; 11	A2	2B	CE
71312	70	70	55	2,5	5 ; 11	DX51D	Z275	CE
71164	70	70	55	2,5	5 ; 11	A2	2B	CE
71465	70	70	55	2,5	5 ; 11	A4	2B	CE
71308	90	90	65	2,0	5 ; 7 ; 13	DX51D	Z275	CE
71340	90	90	65	2,0	5 ; 7 ; 9 ; 13	DX51D	Z275	CE
71206	90	90	65	2,0	5 ; 7 ; 13	A2	2B	CE
71468	90	90	65	2,0	5 ; 7 ; 13	A4	2B	CE
71301	90	90	65	2,5	5 ; 7 ; 13	DX51D	Z275	CE
71319	90	90	65	2,5	5 ; 7 ; 9 ; 13	DX51D	Z275	CE
74845	90	90	65	2,5	5 ; 7 ; 13	DX51D	Z275 + RAL 9003 WHITE	CE
74846	90	90	65	2,5	5 ; 7 ; 13	DX51D	Z275 + RAL 8025 BROWN	CE
71204	90	90	65	2,5	5 ; 7 ; 13	A2	2B	CE
71460	90	90	65	2,5	5 ; 7 ; 13	A4	2B	CE
71311	90	90	90	2,5	5 ; 7 ; 9 ; 11	DX51D	Z275	CE
71315	90	90	90	3,0	5 ; 7 ; 9 ; 11	DX51D	Z275	CE
71310	100	100	55	2,0	5 ; 7 ; 9	DX51D	Z275	DC
71302	100	100	55	2,5	5 ; 7 ; 9	DX51D	Z275	CE
71342	105	105	90	1,5	5 ; 7 ; 9 ; 11	DX51D	Z275	CE
71305	105	105	90	2,0	5 ; 7 ; 9 ; 11	DX51D	Z275	CE
71303	105	105	90	2,5	5 ; 7 ; 9 ; 11	DX51D	Z275	CE
71205	105	105	90	2,5	5 ; 7 ; 9 ; 11	A2	2B	CE
71469	105	105	90	2,5	5 ; 7 ; 9 ; 11	A4	2B	CE
71313	105	105	90	3,0	5 ; 7 ; 9 ; 11	DX51D	Z275	CE
71306	120	120	90	2,5	5 ; 7 ; 9 ; 11	DX51D	Z275	CE
71317	120	120	90	3,0	5 ; 7 ; 9 ; 11	DX51D	Z275	CE
71307	140	140	90	2,5	5 ; 7 ; 9 ; 11	DX51D	Z275	CE
71318	140	140	90	3,0	5 ; 7 ; 9 ; 11	DX51D	Z275	CE



71319



71341



71303



71319

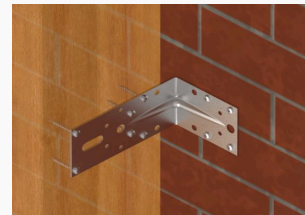


71318

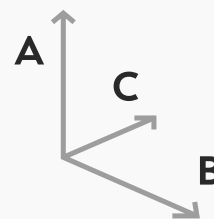
ANGLE BRACKETS

FACADE BRACKETS

ARTICLE	MEASUREMENTS				HOLE DIMENSIONS	MATERIAL	SURFACE	CERTIFICATE
	A	B	C	T				
71551	150	90	65	2,5	5;7;9;11;11X30	DX51D	Z275	CE
71562	150	90	65	2,5	5;7;9;11;11X30	A2	2B	CE
71554	150	150	65	2,5	5;7;9;11;11X30	DX51D	Z275	CE
71552	170	90	65	2,5	5;7;9;11;11X30	DX51D	Z275	CE
71555	170	170	65	2,5	5;7;9;11;11X30	DX51D	Z275	CE
71553	190	90	65	2,5	5;7;9;11;11X30	DX51D	Z275	CE
71556	190	190	65	2,5	5;7;9;11;11X30	DX51D	Z275	CE



71551



71551



71556



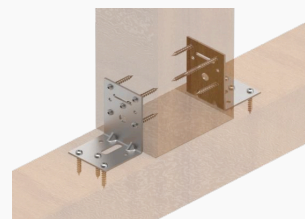
71554



71553

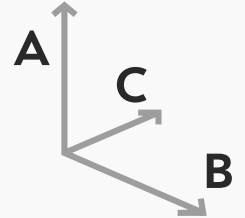
ANGLE BRACKETS STIFFENED

ARTICLE	MEASUREMENTS				HOLE DIMENSIONS	MATERIAL	SURFACE	CERTIFICATE
	A	B	C	T				
73612	50	50	40	2,0	5 ; 11	DX51D	Z275	CE
73622	50	50	40	2,5	5 ; 11	DX51D	Z275	CE
73609	50	50	55	2,5	5 ; 9	DX51D	Z275	CE
73651	50	50	55	2,5	5 ; 9	DX51D	Z275	CE
73619	60	35	60	2,0	5 ; 6X30 ; 11	DX51D	Z275	CE
73618	60	35	60	2,0	5 ; 6X30 ; 10X40	DX51D	Z275	CE
73608	60	35	60	2,5	5 ; 6X30 ; 11	DX51D	Z275	CE
73610	65	65	55	2,0	5 ; 9	DX51D	Z275	CE
73652	65	65	55	2,0	5 ; 9	DX51D	Z275	CE
73603	75	60	60	2	5 ; 6X40 ; 11	DX51D	Z275	CE
73616	75	60	60	2,5	5 ; 6X40 ; 10X40	DX51D	Z275	CE
73617	75	60	60	2,5	5 ; 6X30 ; 11	DX51D	Z275	CE



73607/73614

ARTICLE	MEASUREMENTS				HOLE DIMENSIONS	MATERIAL	SURFACE	CERTIFICATE
	A	B	C	T				
73604	90	40	40	2,5	5 ; 11	DX51D	Z275	CE
73605	90	90	40	2,5	5 ; 11	DX51D	Z275	CE
73601	90	60	60	2,0	5 ; 6X40 ; 11	DX51D	Z275	CE
73607	90	60	60	2,0	5 ; 5X30 ; 10X30 ; 11	DX51D	Z275	CE
73614	90	60	60	2,5	5 ; 5X30 ; 10X30 ; 11	DX51D	Z275	CE
73613	90	60	60	2,5	5 ; 6X40 ; 11	DX51D	Z275	CE
73615	90	60	60	2,5	5 ; 5X30 ; 10X30 ; 10X40	DX51D	Z275	CE
73606	140	40	40	2,5	5 ; 11	DX51D	Z275	CE



73612



73619



73606



73615

ASYMMETRIC ANGLE BRACKETS

ARTICLE	MEASUREMENTS				HOLE DIMENSIONS	MATERIAL	SURFACE	CERTIFICATE
	A	B	C	T				
71501	60	40	60	2,0	5	DX51D	Z275	DC
71512	60	40	60	2,5	5	DX51D	Z275	CE
71502	80	60	60	2,5	5	DX51D	Z275	CE
73004	80	60	55	2,5	5 ; 11	DX51D	Z275	CE
73001	90	40	40	2,5	5 ; 11	DX51D	Z275	CE
73007	90	40	40	3,0	5 ; 11	DX51D	Z275	CE
73003	90	50	55	2,0	5 ; 11	DX51D	Z275	CE
73006	90	50	55	2,5	5 ; 11	DX51D	Z275	CE
71503	100	60	60	2,5	5	DX51D	Z275	DC
81501	100	25	180	2,0	5	DX51D	Z275	DC
71328	120	80	40	2,0	5 ; 11	DX51D	Z275	CE
71329	120	80	40	2,5	5 ; 11	DX51D	Z275	CE



73203

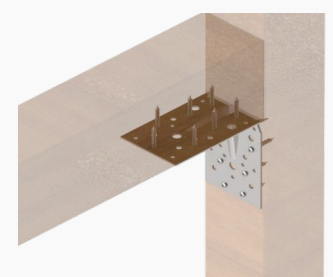
ANGLE BRACKETS

ARTICLE	MEASUREMENTS				HOLE DIMENSIONS	MATERIAL	SURFACE	CERTIFICATE
	A	B	C	T				
71330	120	100	40	2,0	5 ; 11	DX51D	Z275	DC
71331	120	100	40	2,5	5 ; 11	DX51D	Z275	DC
73009	130	50	65	2,5	5 ; 9 ; 11 ; 11X42	DX51D	Z275	CE
71513	140	60	40	2,5	5	DX51D	Z275	DC
73002	140	40	40	2,5	5 ; 11	DX51D	Z275	CE
81503	140	25	180	2,0	5	DX51D	Z275	DC
71332	160	40	40	2,0	5 ; 11	DX51D	Z275	CE
71333	160	40	40	2,5	5 ; 11	DX51D	Z275	CE
71506	160	80	60	2,5	5	DX51D	Z275	CE
71507	160	80	80	2,5	5	DX51D	Z275	CE
71508	160	80	100	2,5	5	DX51D	Z275	DC
71509	160	100	120	2,5	5	DX51D	Z275	DC
73201	180	20	40	2,0	5	DX51D	Z275	CE
71334	200	40	40	2,0	5 ; 11	DX51D	Z275	DC
71335	200	40	40	2,5	5 ; 11	DX51D	Z275	CE
71510	200	100	100	2,5	5	DX51D	Z275	CE
73202	280	20	40	2,0	5	DX51D	Z275	CE
73203	380	20	40	2,0	5	DX51D	Z275	CE



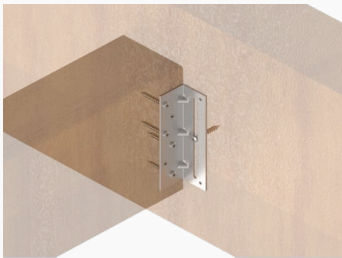
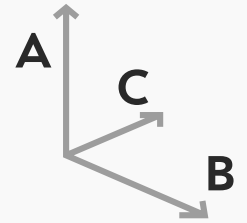
ANGLE BRACKETS WITH HOOKS

ARTICLE	MEASUREMENTS				HOLE DIMENSIONS	MATERIAL	SURFACE	CERTIFICATE
	A	B	C	T				
71351	90	90	90	2,5	5 ; 7 ; 9 ; 11	DX51D	Z275	DC
71155	105	105	90	3,0	5 ; 7 ; 9 ; 11	DX51D	Z275	CE
71354	105	105	90	2,5	5 ; 7 ; 9 ; 11	DX51D	Z275	DC
71356	120	120	90	2,5	5 ; 7 ; 9 ; 11	DX51D	Z275	DC
71358	140	140	90	2,5	5 ; 7 ; 9 ; 11	DX51D	Z275	DC



ANGLE BRACKETS FOR LOG HOMES

ARTICLE	MEASUREMENTS				HOLE DIMENSIONS	MATERIAL	SURFACE	CERTIFICATE
	A	B	C	T				
74402	35	35	130	2,0	4 ; 5 ; 5X120	DX51D	Z275	CE
74406	35	35	130	2,0	4 ; 5 ; 5X120	DX51D	Z275	CE



74406



74406



74402

ANGLE BRACKETS WITH 135° ANGLE

ARTICLE	MEASUREMENTS				HOLE DIMENSIONS	MATERIAL	SURFACE	CERTIFICATE
	A	B	C	T				
73101	50	50	35	2,0	5 ; 9	DX51D	Z275	DC
73111	50	50	35	2,5	5 ; 9	DX51D	Z275	CE
73108	50	50	40	2,0	5 ; 11	DX51D	Z275	DC
73103	70	70	55	2,0	5 ; 11	DX51D	Z275	DC
73112	70	70	55	2,5	5 ; 11	DX51D	Z275	DC
73104	90	90	40	2,5	5 ; 11	DX51D	Z275	CE
73107	90	90	65	2,5	5 ; 7 ; 13	DX51D	Z275	CE
73106	105	105	90	2,5	5 ; 7 ; 9 ; 11	DX51D	Z275	DC



73107



73106



73107



73111

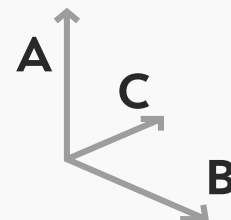


73103

ANGLE BRACKETS

FURNITURE BRACKETS

ARTICLE	MEASUREMENTS				HOLE DIMENSIONS	MATERIAL	SURFACE
	A	B	C	T			
72536	25	25	15	2,0	4,2	CR4	EL. ZN
72401	26	40	22	1,0	4X16 ; 4,2	CR4	EL. ZN
72404	26	40	22	1,0	4X16 ; 4,2	CR4	RAL 9003 WHITE
72409	26	40	22	1,0	4X16 ; 4,2	CR4	RAL 9004 BLACK
72405	26	31	27	1,0	4X11	CR4	RAL 9003 WHITE
72403	27	27	31	1,0	4,5 ; 4,5X13	CR4	EL. ZN
72406	27	27	31	1,0	4,5 ; 4,5X13	CR4	RAL 9003 WHITE
72411	27	27	31	1,0	4,5 ; 4,5X13	CR4	RAL 9004 BLACK
72516	30	30	15	2,0	4,2	CR4	RAL 9003 WHITE
72517	30	30	15	2,0	4,2	CR4	RAL 9004 BLACK
72518	30	30	15	2,0	4,2	CR4	RAL 8025 BROWN
72501	30	30	15	2,0	4,2	CR4	EL. ZN
72510	30	30	25	2,0	4,2	DX51D	Z275 + RAL 9003 WHITE
72504	30	30	25	2,0	4,2	DX51D	Z275
72519	40	40	15	2,0	4,2	CR4	RAL 9003 WHITE
72520	40	40	15	2,0	4,2	CR4	RAL 9004 BLACK
72502	40	40	15	2,0	4,2	CR4	EL. ZN
72505	40	40	20	2,0	5	DX51D	Z275
72506	40	40	40	2,0	5	DX51D	Z275
72522	50	50	15	2,0	4,2	CR4	RAL 9003 WHITE
72523	50	50	15	2,0	4,2	CR4	RAL 9004 BLACK
72503	50	50	15	2,0	4,2	CR4	EL. ZN
72535	75	75	15	2,0	5	DX51D	Z275



72409



72505



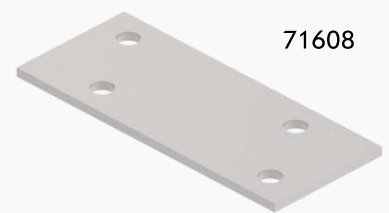
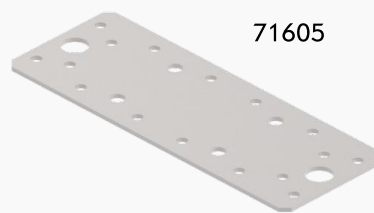
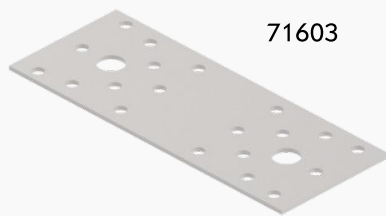
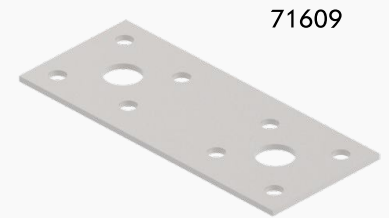
72535



72405

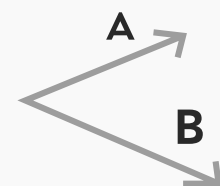
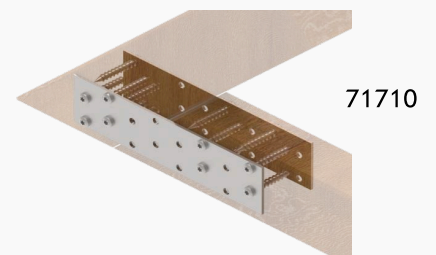
NAIL PLATES

ARTICLE	MEASUREMENTS			HOLE DIMENSIONS	MATERIAL	SURFACE	CERTIFICATE
	A	B	T	∅			
71608	60	25	2,0	4,2	DX51D	Z275	CE
71601	95	35	2,0	5 ; 9	DX51D	Z275	CE
71609	95	40	2,0	5 ; 11	DX51D	Z275	CE
71603	140	55	2,0	5 ; 11	DX51D	Z275	CE
71605	170	65	2,5	5 ; 7 ; 13	DX51D	Z275	CE



PERFORATED NAIL PLATES

ARTICLE	MEASUREMENTS			HOLE DIMENSIONS	MATERIAL	SURFACE	CERTIFICATE
	A	B	T	∅			
71701	80	20	2,0	5	DX51D	Z275	CE
71702	80	30	2,0	5	DX51D	Z275	CE
71703	80	40	2,0	5	DX51D	Z275	CE
71704	100	40	2,0	5	DX51D	Z275	CE
71705	120	40	2,0	5	DX51D	Z275	CE
74952	120	40	2,0	5	A2	2B	CE
71706	120	60	2,0	5	DX51D	Z275	CE
71707	140	40	2,0	5	DX51D	Z275	CE
71708	140	60	2,0	5	DX51D	Z275	CE
71738	140	80	2,0	5	DX51D	Z275	CE
74966	140	80	2,0	5	A2	2B	CE
71709	140	100	2,0	5	DX51D	Z275	CE
71710	160	40	2,0	5	DX51D	Z275	CE

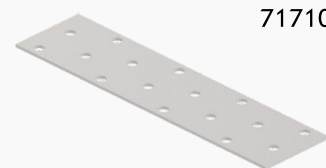


NAIL PLATES

ARTICLE	MEASUREMENTS			HOLE DIMENSIONS	MATERIAL	SURFACE	CERTIFICATE
	A	B	T				
74953	160	40	2,0	5	A2	2B	CE
71711	160	50	2,0	5	DX51D	Z275	CE
71712	160	60	2,0	5	DX51D	Z275	CE
71739	160	80	2,0	5	DX51D	Z275	CE
71713	160	100	2,0	5	DX51D	Z275	CE
71733	180	60	2,0	5	DX51D	Z275	CE
71737	200	40	2,0	5	DX51D	Z275	CE
71714	200	50	2,0	5	DX51D	Z275	CE
74956	200	50	2,0	5	A2	2B	CE
71715	200	60	2,0	5	DX51D	Z275	CE
74957	200	60	2,0	5	A2	2B	CE
71716	200	80	2,0	5	DX51D	Z275	CE
74958	200	80	2,0	5	A2	2B	CE
71717	200	100	2,0	5	DX51D	Z275	CE
74959	200	100	2,0	5	A2	2B	CE
71718	200	120	2,0	5	DX51D	Z275	CE
71719	240	60	2,0	5	DX51D	Z275	CE
71720	240	80	2,0	5	DX51D	Z275	CE
74964	240	80	2,0	5	A2	2B	CE
71721	240	100	2,0	5	DX51D	Z275	CE
71722	240	120	2,0	5	DX51D	Z275	CE
71747	260	100	2,0	5	DX51D	Z275	CE
71740	300	40	2,0	5	DX51D	Z275	CE
71723	300	60	2,0	5	DX51D	Z275	CE
71724	300	80	2,0	5	DX51D	Z275	CE
71725	300	100	2,0	5	DX51D	Z275	CE
74373	300	100	2,0	5 ; 11	DX51D	Z275	CE
71726	300	120	2,0	5	DX51D	Z275	CE
71729	300	160	2,0	5	DX51D	Z275	CE
71731	300	200	2,0	5	DX51D	Z275	CE
71727	400	100	2,0	5	DX51D	Z275	CE
71728	400	120	2,0	5	DX51D	Z275	CE
71749	400	140	2,0	5	DX51D	Z275	CE
71730	400	160	2,0	5	DX51D	Z275	CE
71432	400	200	2,0	5	DX51D	Z275	CE



71701



71710



71717

NAIL PLATES WITH PHASED HOLES

ARTICLE	MEASUREMENTS			HOLE DIMENSIONS	MATERIAL	SURFACE
	A	B	T			
72601	60	25	2,0	4,2	DX51D	Z275
72602	80	20	2,0	5	DX51D	Z275
72606	80	20	2,0	5	DX51D	Z275 + RAL 9004 BLACK
72608	80	20	2,0	5	DX51D	Z275 + RAL 8025 BROWN
72614	80	20	2,0	5	DX51D	Z275 + RAL 7000 GREY
72609	80	40	2,0	5	DX51D	Z275



72601



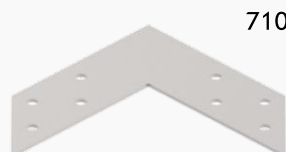
72609



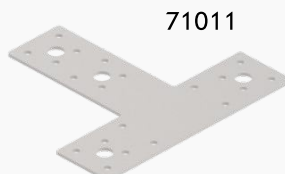
72602

L-AND T-PLATES

ARTICLE	MEASUREMENTS				HOLE DIMENSIONS	MATERIAL	SURFACE
	A	B	C	T			
71001	120	120	35	2,0	5	DX51D	Z275
71002	145	145	35	2,0	5	DX51D	Z275
71011	160	100	45	2,5	5	DX51D	Z275
71003	175	175	35	2,0	5	DX51D	Z275



71001



71011

STRAPS & HANGERS

STEEL STRAPS

ARTICLE	MEASUREMENTS			HOLE DIMENSIONS	MATERIAL	SURFACE	CERTIFICATE
	A	B	T	∅			
72022	25	25000	2,0	12,5	DX51D	Z275	CE
72023	25	25000	2,0	5	DX51D	Z275	CE
72061	40	10000	2,0	5	DX51D	Z275	CE
72024	40	25000	2,0	5	DX51D	Z275	CE
72001	40	50000	2,0	5	DX51D	Z275	CE



72061

SHORING STRAPS

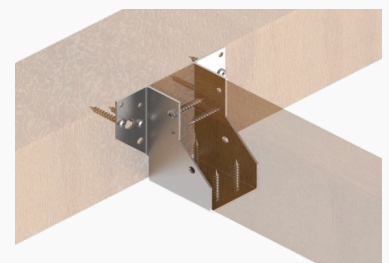
ARTICLE	MEASUREMENTS			HOLE DIMENSIONS	MATERIAL	SURFACE	CERTIFICATE
	A	B	T	∅			
71902	1200	40	2,0	5	DX51D	Z275	CE
71903	1200	60	2,0	5	DX51D	Z275	CE
71904	1200	80	2,0	5	DX51D	Z275	CE



71903

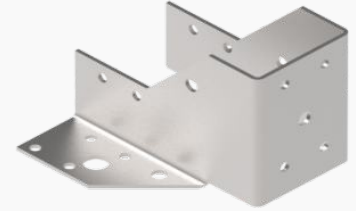
JOIST HANGERS, OUTSIDE

ARTICLE	MEASUREMENTS			HOLE DIMENSIONS	MATERIAL	SURFACE	CERTIFICATE
	A	B	T	∅			
72233	40	99	2,0	5 ; 7 ; 11	DX51D	Z275	CE
72221	40	110	2,0	5 ; 7 ; 11	DX51D	Z275	CE
72219	40	140	2,0	5 ; 7 ; 11 ; 13	DX51D	Z275	CE
72201	45	97	2,0	5 ; 7 ; 11	DX51D	Z275	CE
72289	45	97	2,0	5 ; 7 ; 11	A2	2B	CE
72202	45	107	2,0	5 ; 7 ; 11	DX51D	Z275	CE
72290	45	107	2,0	5 ; 7 ; 11	A2	2B	CE
72203	45	137	2,0	5 ; 7 ; 11 ; 13	DX51D	Z275	CE
72291	45	137	2,0	5 ; 7 ; 11 ; 13	A2	2B	CE

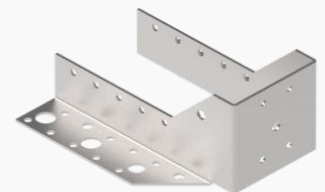


ARTICLE	MEASUREMENTS			HOLE DIMENSIONS	MATERIAL	SURFACE	CERTIFICATE
	A	B	T	∅			
72204	45	167	2,0	5 ; 7 ; 11 ; 13	DX51D	Z275	CE
72235	45	197	2,0	5 ; 7 ; 11 ; 13	DX51D	Z275	CE
72228	48	95	2,0	5 ; 7 ; 11	DX51D	Z275	CE
72286	48	95	2,0	5 ; 7 ; 11	A2	2B	CE
72236	48	106	2,0	5 ; 7 ; 11	DX51D	Z275	CE
72287	48	106	2,0	5 ; 7 ; 11	A2	2B	CE
72227	48	136	2,0	5 ; 7 ; 11 ; 13	DX51D	Z275	CE
72288	48	136	2,0	5 ; 7 ; 11 ; 13	A2	2B	CE
72237	48	166	2,0	5 ; 7 ; 11 ; 13	DX51D	Z275	CE
72238	48	196	2,0	5 ; 7 ; 11 ; 13	DX51D	Z275	CE
72220	51	93	2,0	5 ; 7 ; 11	DX51D	Z275	CE
72285	51	93	2,0	5 ; 7 ; 11	A2	2B	CE
72205	51	105	2,0	5 ; 7 ; 11	DX51D	Z275	CE
72280	51	105	2,0	5 ; 7 ; 11	A2	2B	CE
72206	51	135	2,0	5 ; 7 ; 11 ; 13	DX51D	Z275	CE
72284	51	135	2,0	5 ; 7 ; 11 ; 13	A2	2B	CE
72207	51	165	2,0	5 ; 7 ; 11 ; 13	DX51D	Z275	CE
72208	51	195	2,0	5 ; 7 ; 11 ; 13	DX51D	Z275	CE
72209	60	100	2,0	5 ; 7 ; 11	DX51D	Z275	CE
72231	60	130	2,0	5 ; 7 ; 11 ; 13	DX51D	Z275	CE
72223	60	160	2,0	5 ; 7 ; 11 ; 13	DX51D	Z275	CE
72222	60	190	2,0	5 ; 7 ; 11 ; 13	DX51D	Z275	CE
72242	64	128	2,0	5 ; 7 ; 11 ; 13	DX51D	Z275	CE
72240	64	158	2,0	5 ; 7 ; 11 ; 13	DX51D	Z275	CE
72232	70	125	2,0	5 ; 7 ; 11 ; 13	DX51D	Z275	CE
72243	70	155	2,0	5 ; 7 ; 11 ; 13	DX51D	Z275	CE
72244	70	185	2,0	5 ; 7 ; 11 ; 13	DX51D	Z275	CE
72210	76	122	2,0	5 ; 7 ; 11 ; 13	DX51D	Z275	CE
72211	76	152	2,0	5 ; 7 ; 11 ; 13	DX51D	Z275	CE
72214	76	182	2,0	5 ; 7 ; 11 ; 13	DX51D	Z275	CE
72212	80	120	2,0	5 ; 7 ; 11 ; 13	DX51D	Z275	CE
72248	80	150	2,0	5 ; 7 ; 11 ; 13	DX51D	Z275	CE
72226	80	180	2,0	5 ; 7 ; 11 ; 13	DX51D	Z275	CE
72225	90	145	2,0	5 ; 7 ; 11 ; 13	DX51D	Z275	CE
72249	90	175	2,0	5 ; 7 ; 11 ; 13	DX51D	Z275	CE
72213	100	140	2,0	5 ; 7 ; 11 ; 13	DX51D	Z275	CE
72218	100	170	2,0	5 ; 7 ; 11 ; 13	DX51D	Z275	CE
72215	100	200	2,0	5 ; 7 ; 11 ; 13	DX51D	Z275	CE

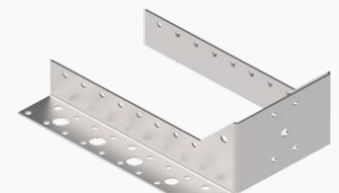
72205



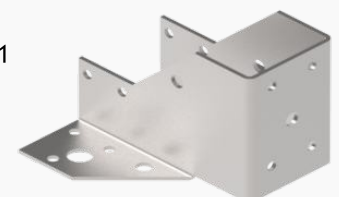
72243



72215



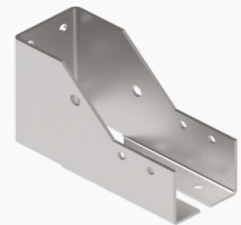
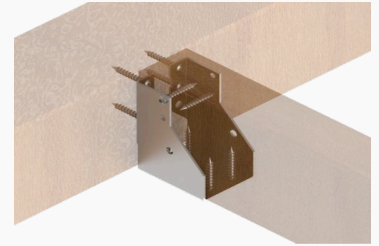
72201



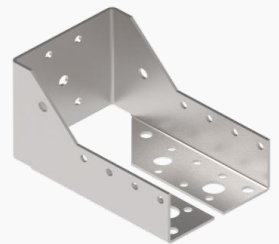
STRAPS & HANGERS

JOIST HANGERS, INSIDE

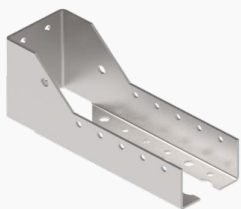
ARTICLE	MEASUREMENTS			HOLE DIMENSIONS	MATERIAL	SURFACE	CERTIFICATE
	A	B	T	∅			
72318	40	110	2,0	5 ; 7	DX51D	Z275	CE
72306	45	137	2,0	5 ; 7	DX51D	Z275	CE
72309	45	97	2,0	5 ; 7	DX51D	Z275	CE
72313	45	167	2,0	5 ; 7	DX51D	Z275	CE
72316	45	107	2,0	5 ; 7	DX51D	Z275	CE
72334	45	197	2,0	5 ; 7	DX51D	Z275	CE
72328	48	166	2,0	5 ; 7	DX51D	Z275	CE
72329	48	95	2,0	5 ; 7	DX51D	Z275	CE
72330	48	136	2,0	5 ; 7	DX51D	Z275	CE
72303	51	105	2,0	5 ; 7	DX51D	Z275	CE
72304	51	135	2,0	5 ; 7	DX51D	Z275	CE
72305	51	165	2,0	5 ; 7	DX51D	Z275	CE
72315	51	93	2,0	5 ; 7	DX51D	Z275	CE
72311	60	160	2,0	5 ; 7	DX51D	Z275	CE
72314	60	100	2,0	5 ; 7	DX51D	Z275	CE
72336	64	158	2,0	5 ; 7	DX51D	Z275	CE
72322	70	125	2,0	5 ; 7	DX51D	Z275	CE
72317	76	122	2,0	5 ; 7 ; 11 ; 13	DX51D	Z275	CE
72302	80	120	2,0	5 ; 7 ; 11 ; 13	DX51D	Z275	CE
72324	80	180	2,0	5 ; 7 ; 11 ; 13	DX51D	Z275	CE
72308	90	145	2,0	5 ; 7 ; 11 ; 13	DX51D	Z275	CE
72301	100	140	2,0	5 ; 7 ; 11 ; 13	DX51D	Z275	CE
72312	100	170	2,0	5 ; 7 ; 11 ; 13	DX51D	Z275	CE



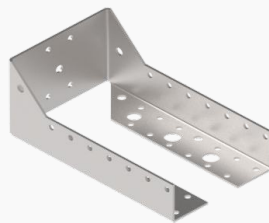
72318



72317



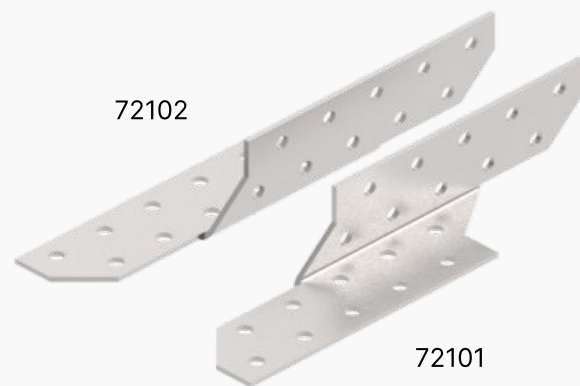
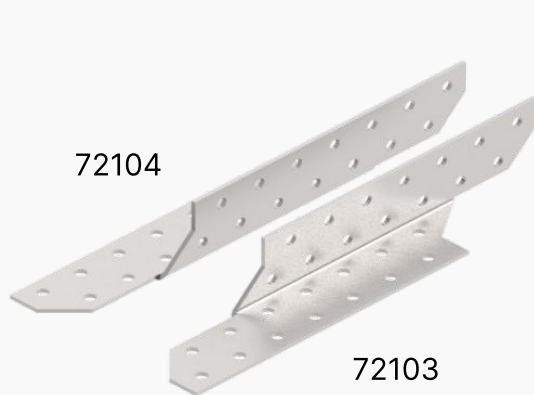
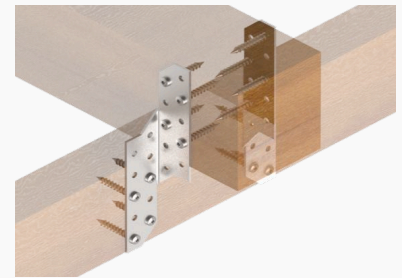
72305



72312

PURLIN ANCHORS

ARTICLE	MEASUREMENTS			HOLE DIMENSIONS	MATERIAL	SURFACE	CERTIFICATE
	A	B	T	∅			
72101	170	32	2,0	5	DX51D	Z275	CE
72102	170	32	2,0	5	DX51D	Z275	CE
72103	210	32	2,0	5	DX51D	Z275	CE
72104	210	32	2,0	5	DX51D	Z275	CE
72105	250	32	2,0	5	DX51D	Z275	CE
72106	250	32	2,0	5	DX51D	Z275	CE
72107	290	32	2,0	5	DX51D	Z275	CE
72108	290	32	2,0	5	DX51D	Z275	CE
72109	330	32	2,0	5	DX51D	Z275	CE
72110	330	32	2,0	5	DX51D	Z275	CE



POST FEET & SUPPORT

POST FEET ADJUSTABLE

ARTICLE	MEASUREMENTS				HOLE DIMENSIONS	MATERIAL	SURFACE
	A	B	C	T			
73523	70-105	70	100	4,0	5 ; 13	STEEL	HDG
73517	70-120	70	110	4,0	5 ; 13	STEEL	HDG
73522	80-160	80	120	4,0	5 ; 13	STEEL	HDG
73519	90-150	90	120	4,0	5 ; 13	STEEL	HDG
73518	105-160	70	130	5,0	5 ; 13	STEEL	HDG
73521	80-120	70	130	5,0	5 ; 13	STEEL	HDG



73517



73521

POST FEET, TYPE I

ARTICLE	MEASUREMENTS				HOLE DIMENSIONS	MATERIAL	SURFACE
	A	B	C	T			
73516	90	60	110	5,0	11	STEEL	HDG

POST FEET, TYPE U

ARTICLE	MEASUREMENTS				HOLE DIMENSIONS	MATERIAL	SURFACE
	A	B	C	T	∅		
73525	45	40	86	4,0	4,2 ; 10	STEEL	HDG
73527	48	40	120	5,0	5 ; 11 ; 13	STEEL	HDG
73501	50	40	85	4,0	4,2 ; 10	STEEL	HDG
73502	50	60	120	5,0	5 ; 11 ; 13	STEEL	HDG
73531	50	40	120	5,0	5 ; 13	STEEL	HDG
73515	70	60	95	5,0	5 ; 11 ; 13	STEEL	HDG
73504	75	60	120	5,0	5 ; 11 ; 13	STEEL	HDG
73535	80	60	120	5,0	5 ; 13	STEEL	HDG
73524	85	90	130	5,0	7 ; 13	STEEL	HDG
73551	90	90	120	5,0	5 ; 11 ; 13	S235+A500HW	HDG
73507	100	40	86	4,0	4,2 ; 10	STEEL	HDG
73509	100	90	120	5,0	5 ; 13	STEEL	HDG
73532	100	60	120	5,0	4,2 ; 9 ; 13	STEEL	HDG
73552	100	70	120	5,0	5 ; 11 ; 13	S235+A500HW	HDG
73508	102	60	120	5,0	5 ; 13	STEEL	HDG
73511	120	70	120	5,0	5 ; 13	STEEL	HDG
73512	120	90	120	5,0	5 ; 11 ; 13	STEEL	HDG
73506	125	90	90	4,0	5 ; 13	STEEL	HDG
73520	140	90	124	4,0	7 ; 13	STEEL	HDG
73514	150	60	120	5,0	5 ; 11 ; 13	STEEL	HDG

73501



73508



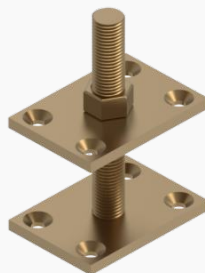
POST FEET & SUPPORT

THREADED COLUMN SHOES

ARTICLE	MEASUREMENTS				HOLE DIMENSIONS	MATERIAL	SURFACE
	A	B	C	T			
74001	50	50	M10X150	5,0	6	STEEL	EL. ZN YELLOW
74002	60	60	M16X120	4,0	5	STEEL	EL. ZN YELLOW
74003	100	70	M20X150	8,0	8,4	STEEL	EL. ZN YELLOW
74007	100	100	M24X200	8,0	8,4	STEEL	EL. ZN YELLOW
74004	100	100	M30X200	8,0	8,4	STEEL	EL. ZN YELLOW



74001



74003

SCREWPOSTS, SCREW-IN

ARTICLE	MEASUREMENTS					HOLE DIMENSIONS	MATERIAL	SURFACE
	A	B	C	D	T			
73933	50	70	125	50	4,0	11X11	S235	HDG
73934	90	70	125	70	4,0	11X11	S235	HDG
73935	100	70	125	70	4,0	11X11	S235	HDG
73936	100	70	125	70	4,0	11X11	S235	HDG
73937	100	100		84	4,0	8 ; 11 ; 14	S235	HDG
73938	100	100		92	4,0	8 ; 11 ; 14	S235	HDG



73933



73937

CIRCULAR DRIVE-IN POST SUPPORT, TYPE A

ARTICLE	MEASUREMENTS				HOLE DIMENSIONS	MATERIAL	SURFACE
	A	C	D	T	∅		
73911	82	150	750	2,0	10	S235	HDG
73912	102	150	750	2,0	10	S235	HDG



DRIVE-IN POST SUPPORTS, TYPE A

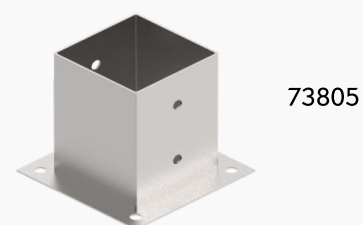
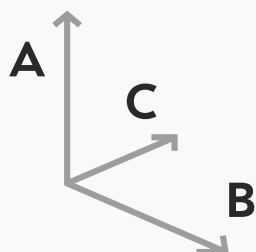
ARTICLE	MEASUREMENTS					HOLE DIMENSIONS	MATERIAL	SURFACE
	A	B	C	D	T	∅		
73901	50	50	150	600	2,0	11	S235	HDG
73915	50	50	150	650	2,0	11 ; 17,5	S235	HDG
73902	50	100	150	750	2,0	11	S235	HDG
73903	75	75	150	750	2,0	11	S235	HDG
73906	95	95	150	750	2,0	11	S235	HDG
73904	100	100	150	750	2,0	11	S235	HDG
73916	100	100	150	750	2,0	11 ; 17,5	S235	HDG
73931	70-102	70	120	750	4,0	5 ; 13	S235	HDG



POST FEET & SUPPORT

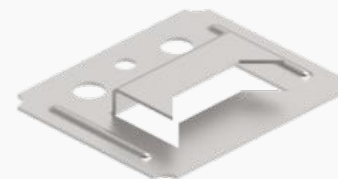
POST FEET WITH GROUND PLATE, B

ARTICLE	MEASUREMENTS				HOLE DIMENSIONS	MATERIAL	SURFACE
	A	B	C	T			
73801	50	50	150	2,0	11 ; 14	S235	HDG
73802	50	100	150	2,0	11	S235	HDG
73804	90	90	150	2,0	11	S235	HDG
73805	100	100	150	2,0	11	S235	HDG



CLAMPS FOR WEATHERBOARD

ARTICLE	MEASUREMENTS		MATERIAL	SURFACE
	A	T		
73706	2	0,45	DX51D	Z140
73708	3	0,45	DX51D	Z140
73709	4	0,45	DX51D	Z140
73710	5	0,45	DX51D	Z140
73721	6	0,45	DX51D	Z140



73721

ANGLE BRACKET SCREWS

ARTICLE	MEASUREMENTS		MATERIAL	SURFACE
	A	T		
72831	40	5,0	STEEL	EL. ZN
72851	40	5,0	STEEL	EL. ZN
72971	40	5,0	A2	A2
72981	40	5,0	A2	A2
72841	40	5,0	STEEL	RUSPERT
72861	40	5,0	STEEL	RUSPERT
72832	50	5,0	STEEL	EL. ZN
72852	50	5,0	STEEL	EL. ZN
72972	50	5,0	A2	A2
72982	50	5,0	A2	A2
72842	50	5,0	STEEL	RUSPERT
72862	50	5,0	STEEL	RUSPERT
72833	60	5,0	STEEL	EL. ZN
72863	60	5,0	STEEL	RUSPERT
72843	60	5,0	STEEL	RUSPERT
72873	60	5,0	STEEL	EL. ZN
72973	60	5,0	A2	A2
72983	60	5,0	A2	A2



72831

FASTENERS & SCREWS

ANCHOR NAILS

ARTICLE	MEASUREMENTS		MATERIAL	SURFACE
	A	T		
72801	40	4,0	STEEL	EL. ZN
72807	40	4,0	STEEL	EL. ZN
72812	40	4,0	STEEL	EL. ZN
72820	40	4,0	STEEL	HDG
72821	40	4,0	STEEL	HDG
72822	40	4,0	STEEL	HDG
72802	50	4,0	STEEL	EL. ZN
72808	50	4,0	STEEL	EL. ZN
72813	50	4,0	STEEL	EL. ZN
72803	60	4,0	STEEL	EL. ZN
72809	60	4,0	STEEL	EL. ZN



72807

SPACERS

ARTICLE	MEASUREMENTS			MATERIAL
	A	B	T	
82120	15	20	8-16	PP
82320	15	20	8-20	PP
82415	15		8-14	HDPE
SEEN15/20	15	20	8-20	PP
TAB15	15		8-14	HDPE
TWP1520	15	20	8-16	PP
2504	20		4-12	PLASTIC
82420	20		8-14	HDPE
SS20	20			PLASTIC
TAB20	20		8-14	HDPE
2505	25		4-12	PLASTIC
82130	25	30	8-16	PP



SS35

ARTICLE	MEASUREMENTS			MATERIAL
	A	B	T	
82330	25	30	8-20	PP
82425	25		8-14	HDPE
SEEN25/30	25	30	8-20	PP
SS25	25			PLASTIC
TAB25	25		8-14	HDPE
TWP2530	25	30	8-16	PP
2506	30		4-12	PLASTIC
2507	30		6-20	PLASTIC
82430	30		8-14	HDPE
SS30	30			PLASTIC
TAB30	30		8-14	HDPE
2508	35		4-12	PLASTIC
82340	35	40	8-20	PP
82435	35		8-14	HDPE
SEEN35/40	35	40	8-20	PP
SS35	35			PLASTIC
TAB35	35		8-14	HDPE
82150	40	50	6-16	PP
82440	40		8-14	HDPE
TAB40	40		8-14	HDPE
TWP4050	40	50	6-16	PP
82350	45	50	8-20	PP
SEEN45/50	45	50	8-20	PP
SEEN55/60	55	60	8-20	HDPE
703-005	60	70	4-16	PP
82171	60	70	4-16	PP
SEEN65/70	65	70	8-20	HDPE
82181	70	80	8-16	PP
SEEN75/80	75	80	8-20	HDPE
SEEN85/90	85	90	8-20	HDPE
82191	90	100	8-16	PP
SEEN90/100	90	100	8-20	HDPE
694210	100	2000		STEEL
694215	150	2000		STEEL
694220	200	2000		STEEL



SEEN
35-40

FASTENERS & SCREWS

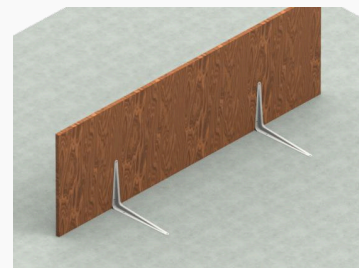
THREADED RODS

ARTICLE	MEASUREMENTS		MATERIAL	SURFACE
	A	B		
82110	5	1000	CR4	EL. ZN
82106	6	1000	CR4	EL. ZN
82113	6	2000	CR4	EL. ZN
82279	6	1000	A2	SS 304
82102	8	1000	CR4	EL. ZN
82105	8	2000	CR4	EL. ZN
82116	8	2000	CR4	EL. ZN
82272	8	1000	A2	SS 304
82281	8	2000	A2	SS 304
82101	10	2000	CR4	EL. ZN
82103	10	1000	CR4	EL. ZN
82115	10	1000	A2	SS 304
82282	10	2000	A2	SS 304
82104	12	1000	CR4	EL. ZN
82107	12	2000	CR4	EL. ZN
82119	12	2000	CR4	EL. ZN
82273	12	1000	A2	SS 304
82283	12	2000	A2	SS 304
82111	14	2000	CR4	EL. ZN
82112	14	1000	CR4	EL. ZN
82284	14	1000	A2	SS 304
82108	16	1000	CR4	EL. ZN
82109	16	2000	CR4	EL. ZN
82286	16	1000	A2	SS 304
82271	18	1000	CR4	EL. ZN
82114	20	1000	CR4	EL. ZN
82117	20	2000	CR4	EL. ZN
82118	20	2000	CR4	EL. ZN
82274	24	1000	CR4	EL. ZN
82278	24	2000	CR4	EL. ZN



SHELF BRACKETS "TYPE-AB"

ARTICLE	MEASUREMENTS				MATERIAL	SURFACE
	A	B	C	T		
81806	82	120	25	1,0	S235	RAL 9004 BLACK
81801	120	82	25	1,0	S235	RAL 9003 WHITE
81807	120	170	25	1,0	S235	RAL 9004 BLACK
81812	120	170	25	1,0	S235	RAL 9006 ALU. GREY
81802	170	120	25	1,0	S235	RAL 9003 WHITE
81814	190	270	25	1,0	S235	RAL 9006 ALU. GREY
81803	220	155	25	1,0	S235	RAL 9003 WHITE



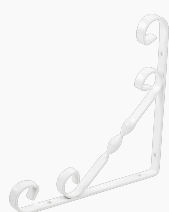
81802



81807

SHELF BRACKETS "ANTIQUE"

ARTICLE	MEASUREMENTS				MATERIAL	SURFACE
	A	B	C	T		
81751	100	100	15	3,0	S235	RAL 9003 WHITE
81755	100	100	15	3,0	S235	RAL 9004 BLACK
81752	150	150	15	2,5	S235	RAL 9003 WHITE
81756	150	150	15	2,5	S235	RAL 9004 BLACK
81753	200	200	15	2,5	S235	RAL 9003 WHITE
81757	200	200	15	2,5	S235	RAL 9004 BLACK
81758	250	250	15	2,5	S235	RAL 9004 BLACK
81754	250	250	15	2,5	S235	RAL 9003 WHITE



81753



81751

SHELF BRACKETS & SUPPORTS

SHELF BRACKETS "TYPE-C"

ARTICLE	MEASUREMENTS				MATERIAL	SURFACE
	A	B	C	T		
81701	146	125	24	1,0	S235	RAL 9003 WHITE
81705	146	125	24	1,0	S235	RAL 9004 BLACK
81702	202	150	26	1,0	S235	RAL 9003 WHITE
81706	202	150	26	1,0	S235	RAL 9004 BLACK
81703	253	203	30	1,0	S235	RAL 9003 WHITE
81707	253	203	30	1,0	S235	RAL 9004 BLACK

81701



CONSOLES W. AND WITHOUT SUPPORT

ARTICLE	MEASUREMENTS				MATERIAL	SURFACE
	A	B	C	T		
81301	115	150	40	5,0	S235	HDG
81302	115	200	40	5,0	S235	HDG
81310	115	250	40	5,0	S235	HDG
81304	230	300	40	5,0	S235	HDG
81306	230	400	40	5,0	S235	HDG
81307	230	500	40	5,0	S235	HDG
81309	230	600	40	5,0	S235	HDG
81303	250	230	40	5,0	S235	HDG
81308	400	800	40	5,0	S235	HDG
81312	1000	400	40	5,0	S235	HDG
81313	1200	400	40	5,0	S235	HDG

81307



81301

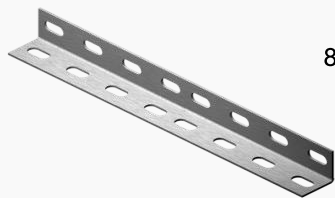


U AND L TRAPS

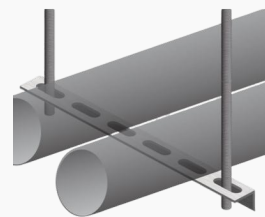
ARTICLE	MEASUREMENTS				MATERIAL	SURFACE
	A	B	C	T		
81201	2000	30	30	2,0	S235	HDG
81202	2000	30	30	2,0	S235	HDG



81201



81201



81201

SHELF BRACKETS

ARTICLE	MEASUREMENTS				MATERIAL	SURFACE
	A	B	C	T		
81101	75	100		1,0	CR4	RAL 9003 WHITE
81111	75	100		1,0	CR4	RAL 9005 BLACK
81121	75	100		1,0	CR4	RAL 8017 BROWN
81131	75	100		1,0	CR4	RAL 9006 ALU. GREY
81102	100	125		1,0	CR4	RAL 9003 WHITE
81112	100	125		1,0	CR4	RAL 9005 BLACK
81122	100	125		1,0	CR4	RAL 8017 BROWN
81132	100	125		1,0	CR4	RAL 9006 ALU. GREY
81103	125	150		1,0	CR4	RAL 9003 WHITE
81113	125	150		1,0	CR4	RAL 9005 BLACK
81123	125	150		1,0	CR4	RAL 8017 BROWN
81133	125	150		1,0	CR4	RAL 9006 ALU. GREY
81104	150	200	30	1,0	CR4	RAL 9003 WHITE
81114	150	200	30	1,0	CR4	RAL 9005 BLACK
81124	150	200		1,0	CR4	RAL 8017 BROWN
81134	150	200	30	1,0	CR4	RAL 9006 ALU. GREY

SHELF BRACKETS & SUPPORTS

ARTICLE	MEASUREMENTS				MATERIAL	SURFACE
	A	B	C	T		
81105	200	250	30	1,0	CR4	RAL 9003 WHITE
81115	200	250		1,0	CR4	RAL 9005 BLACK
81125	200	250		1,0	CR4	RAL 8017 BROWN
81135	200	250		1,0	CR4	RAL 9006 ALU. GREY
81106	250	300	30	1,0	CR4	RAL 9003 WHITE
81116	250	300	30	1,0	CR4	RAL 9005 BLACK
81126	250	300		1,0	CR4	RAL 8017 BROWN
81136	250	300		1,0	CR4	RAL 9006 ALU. GREY
81151	250	150	30	4,0	S235	EL. ZN
81161	250	150	30	4,0	S235	RAL 9003 WHITE
81162	250	150	30	4,0	S235	RAL 9004 BLACK
81107	300	350	30	1,0	CR4	RAL 9003 WHITE
81117	300	350	30	1,0	CR4	RAL 9005 BLACK
81137	300	350		1,0	CR4	RAL 9006 ALU. GREY
81163	300	200	30	4,0	S235	RAL 9003 WHITE
81155	400	250		4,0	S235	EL. ZN
81166	400	250	30	4,0	S235	RAL 9004 BLACK
81167	500	330	30	4,0	S235	RAL 9003 WHITE
81127	300	350		1,0	CR4	RAL 8017 BROWN
81153	300	200		4,0	S235	EL. ZN
81164	300	200	30	4,0	S235	RAL 9004 BLACK
81165	400	250	30	4,0	S235	RAL 9003 WHITE
81157	500	330	30	4,0	S235	EL. ZN
81168	500	330	30	4,0	S235	RAL 9004 BLACK



81111



81105

BUILDING CLEATS

ARTICLE	MEASUREMENTS		MATERIAL	SURFACE
	T	A		
81001	6,5	200	STEEL HRB400E	B500A
81004	6,5	200	STEEL HRB400E	EL. ZN
81007	6,5	200	STEEL HRB400E	B500A
81010	6,5	200	STEEL HRB400E	EL. ZN
81013	6,5	200	STEEL HRB400E	HDG
81002	8,0	270	STEEL HRB400E	B500A
81005	8,0	270	STEEL HRB400E	EL. ZN
81008	8,0	270	STEEL HRB400E	B500A
81011	8,0	270	STEEL HRB400E	EL. ZN
81014	8,0	270	STEEL HRB400E	HDG
81003	10,0	320	STEEL HRB400E	B500A
81006	10,0	320	STEEL HRB400E	EL. ZN
81012	10,0	320	STEEL HRB400E	EL. ZN
81015	10,0	320	STEEL HRB400E	HDG



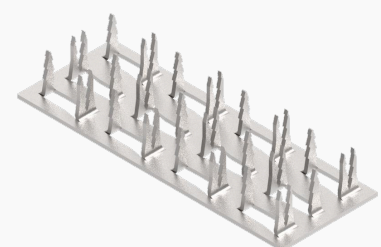
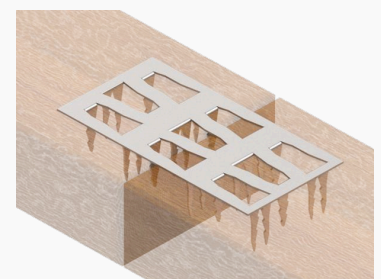
81004



81012

BARBED CONNECTORS

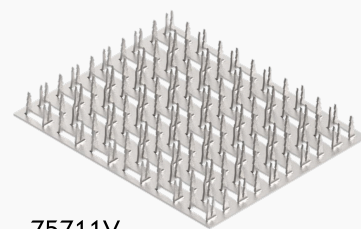
ARTICLE	MEASUREMENTS				MATERIAL	SURFACE	CERTIFICATE
	A	B	C	T			
75701V	36	100	14	1,3	S350GD	Z275	DC
75702V	36	150	14	1,3	S350GD	Z275	DC
75731V	48	150	14	1,3	S350GD	Z275	DC
75703V	60	100	14	1,3	S350GD	Z275	DC
75704V	60	150	14	1,3	S350GD	Z275	DC
75705V	60	300	14	1,3	S350GD	Z275	DC
75707V	96	150	14	1,3	S350GD	Z275	DC
75708V	96	200	14	1,3	S350GD	Z275	DC
75709V	96	250	14	1,3	S350GD	Z275	DC
75710V	96	300	14	1,3	S350GD	Z275	DC
75711V	120	150	14	1,3	S350GD	Z275	DC
75712V	120	200	14	1,3	S350GD	Z275	DC
75713V	120	250	14	1,3	S350GD	Z275	DC
75717V	144	200	14	1,3	S350GD	Z275	DC



75701V

MISCELLANEOUS

ARTICLE	MEASUREMENTS				MATERIAL	SURFACE	CERTIFICATE
	A	B	C	T			
75718V	144	250	14	1,3	S350GD	Z275	DC
75719V	144	300	14	1,3	S350GD	Z275	DC
75721V	180	200	14	1,3	S350GD	Z275	DC
75722V	180	250	14	1,3	S350GD	Z275	DC
75723V	180	300	14	1,3	S350GD	Z275	DC



75711V

TERRACE SPACERS AND SETS

ARTICLE	MEASUREMENTS		MATERIAL
	A		
72481	8		PP
72486	100		PP
72487	16,5		PP
72489	10-17		PP
72492	30-45		PP
72493	45-70		PP
72494	70-120		PP
72495	120-220		PP
72496	150-350		PP
72497	75-150		PP
72498	45-75		PP
72499	200		PP



72487



72486

LOG BRACKETS

ARTICLE	MEASUREMENTS				HOLE DIMENSIONS	MATERIAL	SURFACE	CERTIFICATE
	A	B	C	T				
73301	200	135	40	2,0	5	DX51D	Z275	DC
73302	290	170	40	2,0	5	DX51D	Z275	DC

ROOM ORGANISERS

ARTICLE	MEASUREMENTS			MATERIAL	SURFACE
	A	B	C		
90301	115	110	67	S235	Powder coated
90302	120	240	67	S235	Powder coated
90303	120	130	67	S235	Powder coated
90304	120	80	67	S235	Powder coated
90305	70	100	25	S235	Powder coated
90306	120	120	160	S235	Powder coated
90307	75	75	175	S235	Powder coated
90308	145	135	70	S235	Powder coated
90309	205	300	610	S235	Powder coated
90310	95	130	610	S235	Powder coated
90312	215	165	310	S235	Powder coated
90313	120	245	190	S235	Powder coated
90314	130	10-104	310	S235	Powder coated
90315	127	210	105	S235	Powder coated
90316	230	320	68	S235	Powder coated
90317	80	335	68	S235	Powder coated
90318	100	300	600	S235	Powder coated
90319	640	320	630	S235	Powder coated
90320	320	18	1200	PVC	Powder coated
90321	100	15	1200	ALUMINIUM	Powder coated
90322	250	150	320	STEEL	Powder coated
90323	320	18	600	PVC	Powder coated
90324	100	15	600	ALUMINIUM	Powder coated

